

CAPE COD WATERFRONT

CAPE COD WATERFRONT APPROXIMATE ROOM SIZES

ENTRY LEVEL

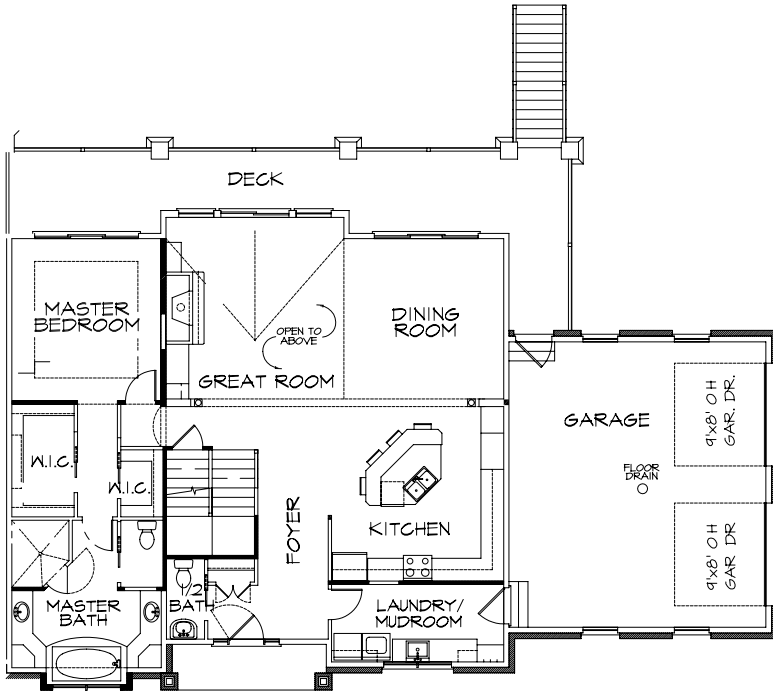
Great Room	16' x 16'
Dining	14' x 14'
Kitchen	15' x 15'
Foyer	11' x 7'
Master Bedroom	13' x 14'
Master Bath	12' x 13'
Half Bath	3' x 6'
Laundry Room	6' x 15'
Elevated Decks	Two 7' x 13', One 6' x 16'

SECOND STORY

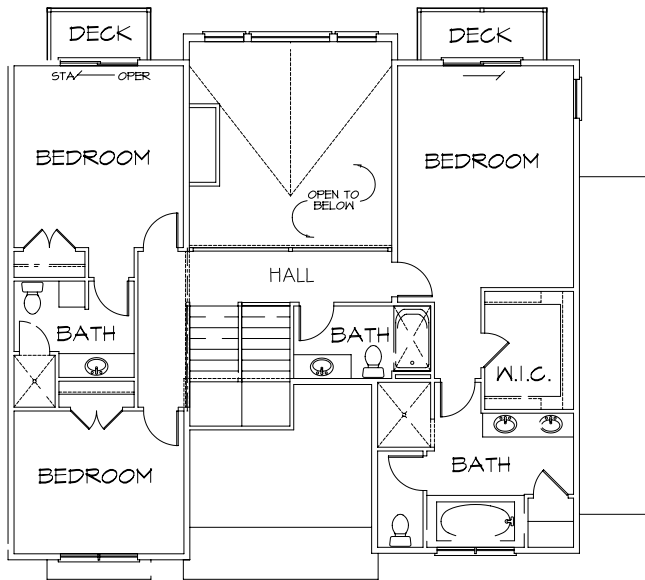
Bedroom	13' x 17'
with Private Bath	10' x 15'
Bedroom	13' x 14"
with Private Bath	9' x 7'
Bedroom	11' x 13'
Bath	10' x 5'

LOWER LEVEL

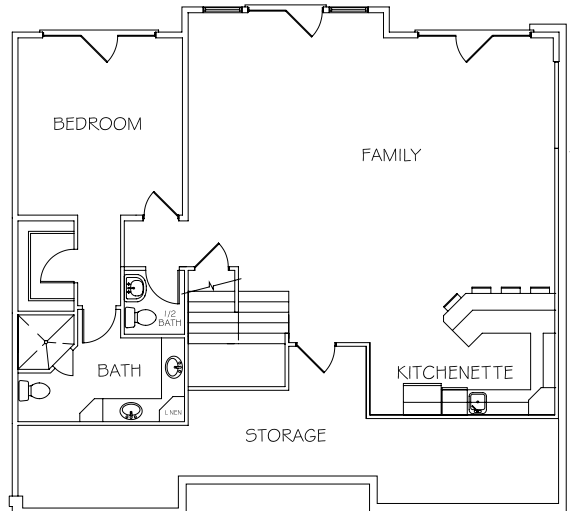
Family Room	30' x 18'
Kitchenette	15' x 10'
Bedroom	13' x 14'
with Private Bath	13' x 8'
Half Bath	4' x 4'



FIRST FLOOR PLAN



SECOND FLOOR PLAN



LOWER LEVEL FLOOR PLAN



Offered by

PROFESSIONAL REALTY OF DOOR COUNTY, INC.

733 South Bay Shore Drive (Hwy 42) • Box 589 • Sister Bay, Wisconsin 54234
920-854-4994 • Fax 920-854-2276